

# Roundtable® TSMS

## Software Configuration Management



### BENEFITS

- Increase development team productivity
- Improve product quality
- Decrease time-to-deployment
- Streamline your development environment
- Automate application deployment

### REPUTATION

For over a decade, Roundtable Total Software Management System has played a critical role in providing Software Configuration Management solutions to software companies and development departments worldwide.

***“Compared to previous systems that we’d been using, we’re seeing a good 50% to 60% savings in time. Productivity is probably increased 30% to 40%. I can attribute a lot of this to the foremost benefit where Roundtable has helped us the most, which is standardization.”***

Joe Towns  
Sr. Programmer/Analyst  
WSIPC

**Roundtable TSMS** improves collaboration in enterprise application development. Both developers and project managers benefit from Roundtable’s rich feature set. This complete Software Configuration Management (SCM) solution for Progress® OpenEdge® development integrates schema management, task management, version control, impact analysis, smart compilation, and release control.

### Improve Product Quality

Roundtable TSMS automates change promotion throughout the development life cycle. Using Roundtable’s impact analysis tools, QA staff can instantly see what has changed, who changed it, why it has changed, and what is impacted by a change. Automated movement of baselines ensures that what gets changed gets tested, and what gets tested is what the end users receive.

### Application Deployment

Roundtable TSMS manages the application release level for each end-user site, enabling the creation of optimized deployment packages. The deployment packages contain everything needed to deploy software changes, update schema, and compile your application updates at end-user sites—with no additional license fees.

### Features

- **OpenEdge Integration**  
SCM integration with OpenEdge Studio and OpenEdge Architect.
- **Schema Management**  
Manage and promote database schema changes through development life cycle.
- **Task Management**  
Organize related software changes for promotion and auditing.
- **Impact Analysis**  
View relationships between application resources with a single click.
- **Variant Management**  
Manage application resource and schema customizations.
- **Smart Compilation**  
Automatically compile programs affected by a change.
- **Release Control**  
Identify and promote application releases through the entire life cycle.
- **Deployments**  
Deliver wizard-driven full and incremental updates to specific end-user sites.
- **Security**  
Control access and privileges.
- **Partner Sites**  
Allows direct synchronization with partner repositories.
- **Hooks and API**  
Integrate existing systems or extend Roundtable functionality.

# Roundtable TSMS

## Software Configuration Management

### HIGHLIGHTS

Manages the complete software life cycle from development through deployment.

Provides an easy-to-navigate view of your software project at every stage of the life cycle.

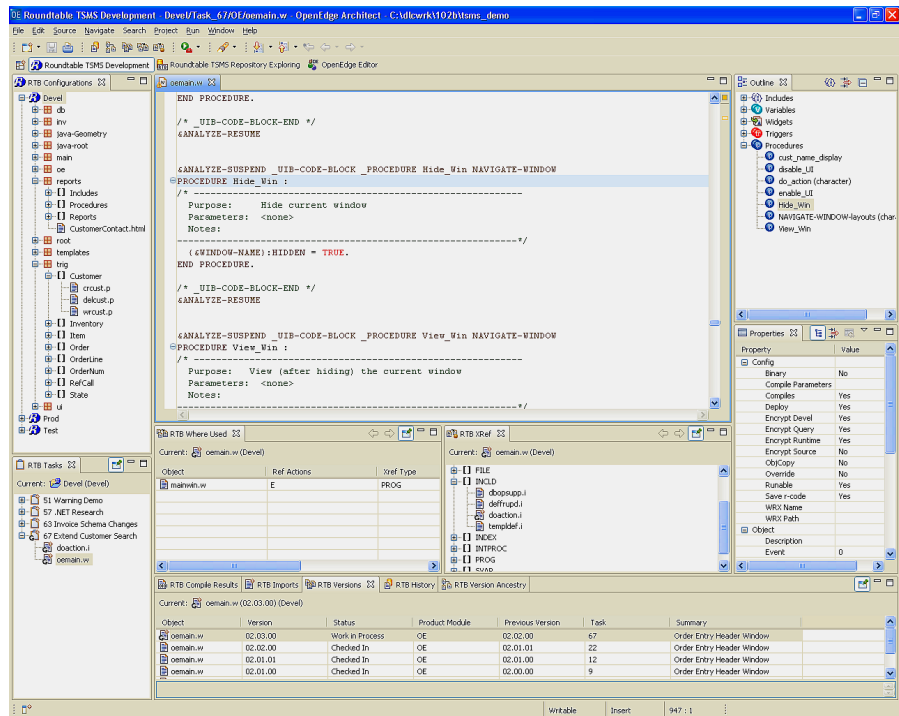
Increases developer productivity through integration with OpenEdge Studio and OpenEdge

*“Roundtable has given our team a competitive edge. Extending our development resources with the use of Roundtable has meant we can support customers more effectively, efficiently, and deliver updates to our customers with greater frequency.”*

Rob Wassel  
Director of Technology for  
Hagen OA  
Electronics for Imaging

### Streamline Your Development Environment

Roundtable provides a project view for your application at every stage of the development life cycle. You can easily navigate procedures, database schema, graphics, data files, and documentation—virtually anything that makes up your project. Change history, version lineage, impact analysis, and tasks are instantly available. Roundtable maintains descriptions, current states, attributes, version notes, and change information for each application resource.



### System Requirements

Roundtable TSMS requires both OpenEdge database and OpenEdge development licenses. Roundtable TSMS is supported on all OpenEdge development platforms.

For more information about Roundtable TSMS, please contact Tugboat Software or your local Progress sales representative.

**Tugboat Software** is a technology alliance partner with Progress Software Corporation - a global supplier of software and services that simplify the development, deployment and management of business applications.



Developed and supported by  
20301 Birch St. Suite 202 Newport Beach CA 93660  
800-777-3581  
www.tugboatsoftware.com

